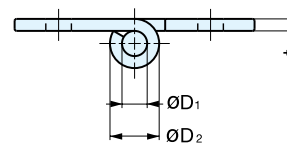
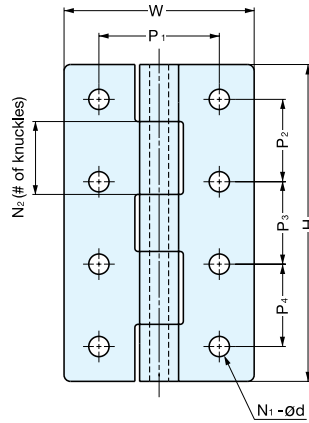


BUTT HINGE



LSA, LSB



• Available as a weld-on type without holes (LSA) or screw-on type with holes (LSB). Note: Screw holes for LSB Series are not countersunk.

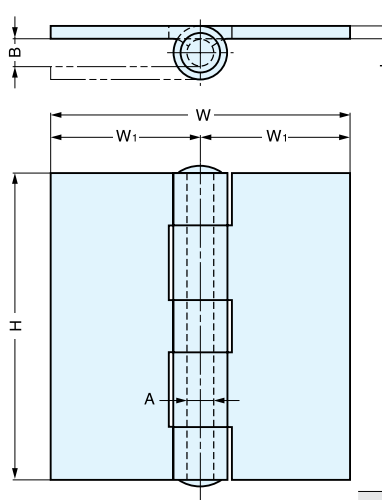
Material	Finish
304 Stainless Steel	Mirror

Item No.	Holes	H	W	P ₁	P ₂	P ₃	P ₄	t	d	D ₁	(D ₂)	N ₁	N ₂	Door Weight (kg/pair)	Weight (g)	Box (pcs)	Carton (pcs)	
LSA-40	Without Holes	40 (1-37/64")	35 (1-3/8")	-	-	-	-	1.5	-	3.0	6.3	-	3	6 (13 lbs/pair)	25	20	500	
LSA-50		50 (1-31/32")		-	-	-	-	-	-	-	-	-	-	3	8 (17 lbs/pair)			30
LSA-65		65 (2-9/16")	50 (1-31/32")	-	-	-	-	2.0	-	4.5	8.8	-	5	13 (28 lbs/pair)	66	10	100	
LSA-75		75 (2-61/64")		-	-	-	-	-	-	-	-	-	-	5	15 (33 lbs/pair)			76
LSA-90		90 (3-35/64")	60 (2-23/64")	-	-	-	-	3.0	-	6.0	12.3	-	8	25 (55 lbs/pair)	190	10	100	
LSA-100		100 (3-15/16")		-	-	-	-	-	-	-	-	-	-	8	30 (66 lbs/pair)			200
LSB-40	With Holes	40 (1-37/64")	35 (1-3/8")	22	26	-	-	1.5	3.2	3.0	6.3	4	3	6 (13 lbs/pair)	25	20	500	
LSB-50		50 (1-31/32")		34	-	-	-	-	4.3	-	-	-	6	5	8 (17 lbs/pair)			30
LSB-65		65 (2-9/16")	50 (1-31/32")	30	23	23	-	2.0	-	4.5	8.8	-	6	5	13 (28 lbs/pair)	64	10	100
LSB-75		75 (2-61/64")		27	27	-	-	-	5.3	-	-	-	8	5	15 (33 lbs/pair)	74		
LSB-90		90 (3-35/64")	60 (2-23/64")	38	35	35	-	3.0	6.4	6.0	12.3	-	8	5	25 (55 lbs/pair)	180	10	100
LSB-100		100 (3-15/16")		26	26	26	-	-	-	-	-	-	8	5	30 (66 lbs/pair)	195		

STAINLESS STEEL WELD-ON HINGE



LSK



• Available as weld-on type without holes only. For screw-on type butt hinges, please see 3535 and 4040 Series hinges (P.192).

Material	Finish
304 Stainless Steel	Satin

Item No.	H	W ₁	W	A	B	t	Weight (g)	Box (pcs)	Carton (pcs)
LSK-1157-1	51 (2")	25.0	50 (2")	6	6	2.5	76	10	250
LSK-1157-2	64 (2-1/2")	32.0	64 (2-1/2")	7	7	3.0	141		150
LSK-1157-3	76 (3")	37.0	74 (2-15/16")				188		100
LSK-1157-4	89 (3-1/2")	43.5	87 (3-3/8")	8	8	4.0	257		80
LSK-1157-5	101.6 (4")	49.5	99 (3-7/8")				417	50	
LSK-1157-6	127 (5")	59.5	119 (4-43/64")	11	11	4.0	681	6	30
LSK-1157-7	152 (6")	71.5	143 (5-5/8")	12	12	4.0	928	4	20